

## What happens next?

We have now completed our review of South Somerset District Council.

The recommendations must now be approved by Parliament. A draft order - the legal document which brings into force our recommendations - will be laid in Parliament.

Subject to parliamentary scrutiny, the new electoral arrangements will come into force at the local elections in May 2019.

## Our recommendations:

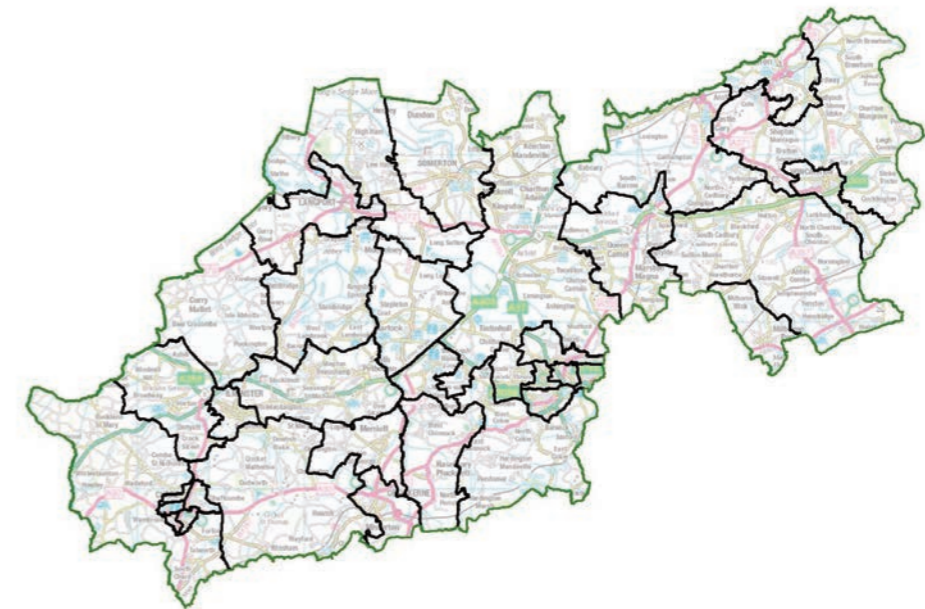
The table lists all the wards we are proposing as part of our final recommendations along with the projected number of voters in each ward.

The table also shows the electoral variances for each of the proposed wards, which tells you how we have delivered electoral equality.

# South Somerset District Council

## Final recommendations on the new electoral arrangements

Ward Name:	No. of Cllrs:	No. of Electors per Cllr (2023):	Variance from Average %	Ward Name:	No. of Cllrs:	No. of Electors per Cllr (2023):	Variance from Average %
Blackdown & Tatworth	2	2,260	-2%	Islemoor	1	2,103	-9%
Blackmoor Vale	2	2,484	8%	Martock	2	2,442	6%
Bruton	1	2,165	-6%	Milborne Port	1	2,435	6%
Brympton	3	2,138	-7%	Neroche	1	2,146	-7%
Burrow Hill	1	2,467	7%	Northstone, Ivelchester & St Michael's	3	2,520	9%
Camelot	1	2,400	4%	Parrett	1	2,028	-12%
Cary	2	2,504	9%	South Petherton	2	2,285	-1%
Chard Avishaves	1	2,180	-5%	Tower	1	2,027	-12%
Chard Combe	1	2,063	-10%	Turn Hill	1	2,175	-6%
Chard Crimchard	1	2,091	-9%	Wessex	2	2,415	5%
Chard Holyrood	1	2,380	3%	Wincanton	2	2,497	8%
Chard Jocelyn	1	2,132	-7%	Windwhistle	1	2,087	-9%
Coker	2	2,348	2%	Yeovil College	3	2,204	-4%
Crewkern	3	2,376	3%	Yeovil Lyde	2	2,413	5%
Curry Rivel, Huish & Langport	2	2,437	6%	Yeovil Summerlands	3	2,413	5%
Eggwood	1	2,148	-7%	Yeovil Westland	3	2,152	-7%
Hamdon	1	2,377	3%	Yeovil Without	3	2,076	-10%
Ilminster	2	2,506	9%				
				<b>Totals:</b>	<b>60</b>	<b>-</b>	<b>-</b>
				<b>Averages:</b>	<b>-</b>	<b>2,304</b>	<b>-</b>



### Who we are:

- The Local Government Boundary Commission for England is an independent body set up by Parliament.
- We are not part of government or any political party.
- We are accountable to Parliament through a committee of MPs chaired by the Speaker of the House of Commons.
- Our main role is to carry out electoral reviews of local authorities throughout England.

### Why South Somerset?

- South Somerset currently has high levels of electoral inequality: some councillors represent many more - or many fewer - voters than others.
- Therefore the value of your vote, in district council elections, varies depending on where you live in the district.
- We are seeking to improve levels of electoral equality for local voters

### Electoral review:

- An electoral review examines and proposes new electoral arrangements for a local authority, including:
- The total number of councillors representing the council's voters ('council size').
  - The names, number and boundaries of wards or electoral divisions.
  - The number of councillors for each ward or division.

### Our proposals:

- South Somerset District Council currently has 60 councillors. Based on the evidence we received, the Commission recommends that **60 councillors** should continue to serve the district in the future.
- The Commission believes the final recommendations meet our statutory criteria to:
  - (1) Deliver electoral equality for voters.
  - (2) Reflect community interests and identities.
  - (3) Promote effective and convenient local government.

## Summary of our recommendations

We have considered all the submissions we received during our consultation on our draft recommendations.

The final recommendations propose that South Somerset should have **60 councillors**.

This is **no change** from the current number of councillors.

Those councillors should represent seven three-councillor wards, 11 two-councillor wards and 17 one-councillor wards across the district.

South Somerset should have 35 wards, four fewer than there are now.

The boundaries of eleven wards will stay the same, the rest should change.

An outline of the proposals is shown in the map to the right. A detailed report on the recommendations and interactive mapping is available on our website at: [www.lgbce.org.uk](http://www.lgbce.org.uk).

Find out more: [consultation.lgbce.org.uk](http://consultation.lgbce.org.uk):

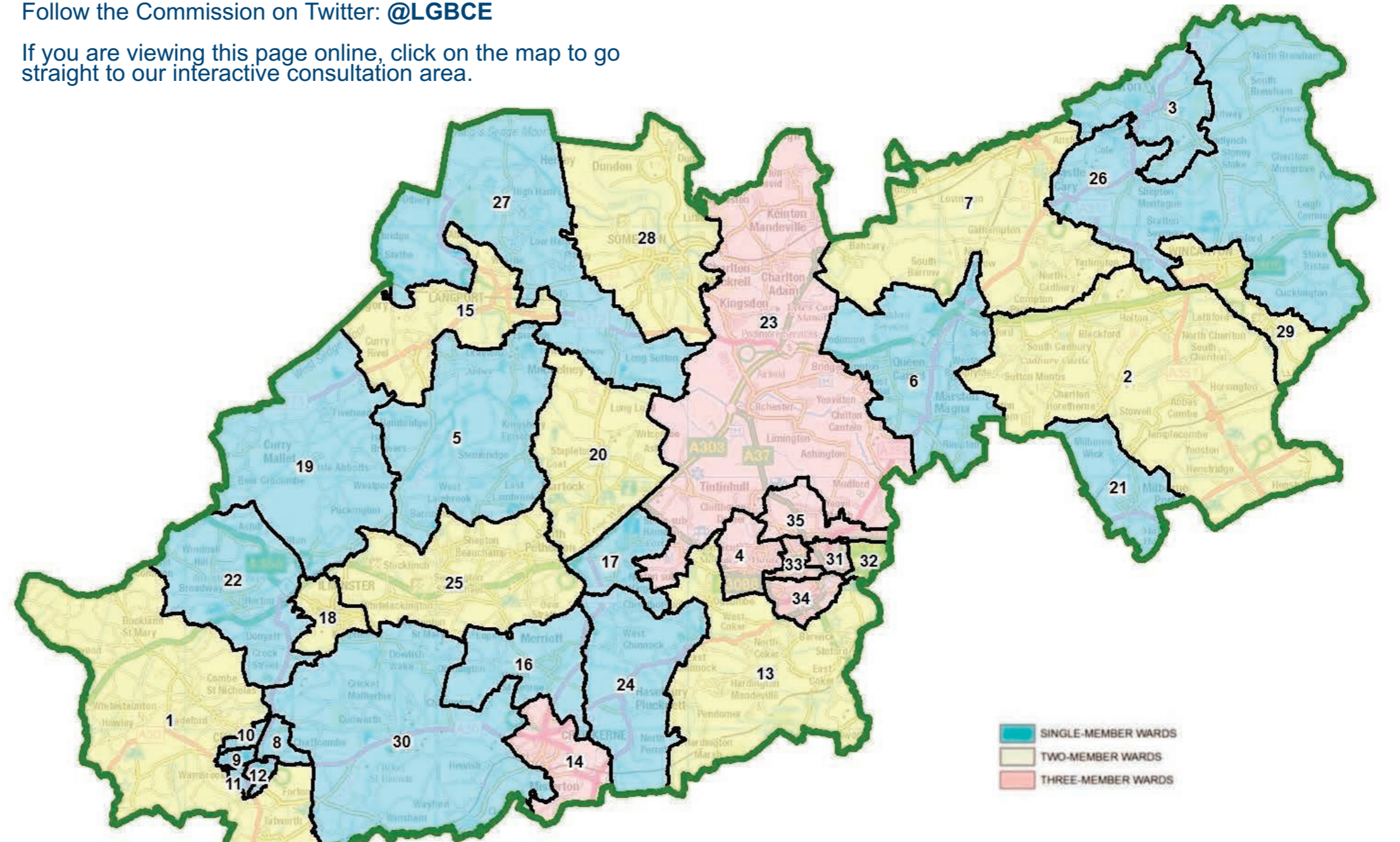
- view the map of our recommendations down to street level.
- zoom into the areas that interest you most.
- find more guidance on the review process.
- read the full report of our recommendations.

# Overview of final recommendations for South Somerset District Council

View this map online and explore it in more detail at: [consultation.lgbce.org.uk](http://consultation.lgbce.org.uk)

Follow the Commission on Twitter: [@LGBCE](https://twitter.com/LGBCE)

If you are viewing this page online, click on the map to go straight to our interactive consultation area.



Stage of review	Description
22 August - 30 October 2017	Public consultation on new ward boundaries
9 January - 19 March 2018	Public consultation on draft recommendations
8 May 2018	Publication of final recommendations
May 2019	Subject to parliamentary approval - implementation of new arrangements at local elections

contains Ordnance Survey data © Crown copyright and database rights 2018

### Key:

1	Blackdown & Tatworth	10	Chard Crimchard	19	Islemoor	27	Turn Hill
2	Blackmoor Vale	11	Chard Holyrood	20	Martock	28	Wessex
3	Bruton	12	Chard Jocelyn	21	Milborne Port	29	Wincanton
4	Brympton	13	Coker	22	Neroche	30	Windwhistle
5	Burrow Hill	14	Crewkerne	23	Northstone, Ivelchester & St Michael's	31	Yeovil College
6	Camelot	15	Curry Rivel, Huish & Langport	24	Parrett	32	Yeovil Lyde
7	Cary	16	Eggwood	25	South Petherton	33	Yeovil Summerlands
8	Chard Avishayes	17	Hamdon	26	Tower	34	Yeovil Westland
9	Chard Combe	18	Ilminster			35	Yeovil Without